

february 3rd, 2018

*Tomás Cabado*

four duos

- flute / cello
- oboe / viola
- accordion / double bass
- harp / percussion (a large, dark cymbal and little objects).

each duo has four pieces or situations.

two of them are written and the other two are tacet (silence).

the order of this situations or pieces is not fixed.

all duos occur simultaneously.

(...) = keep doing this for a while

x... = repeat any number of times

( ) = optional

*¿are we moving together?*

*¿are we moving at all?*

one plays this notes as a very sparse melody, spaces between notes.  
the other plays some of this notes (very long) in any time, any order.



repeat (you might switch)

subtle noises, like straight lines drawn by hand, of different lengths.  
sharp beginnings and endings.

the sounds are to be played together.

between sounds: waiting.

play several times

The musical notation consists of two staves. The upper staff uses a treble clef and contains three notes: a quarter note on the second line (D4), a quarter note on the second space (E4), and a quarter note on the second space with a flat (Bb4). The lower staff uses a bass clef and contains two notes: a quarter note on the second space (D3) and a quarter note on the second space (E3). A dynamic marking of *mf* is placed below the first note of the lower staff.



a soft noise, for a long time  
supporting each other, being together.

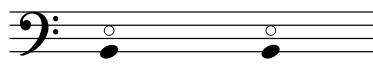
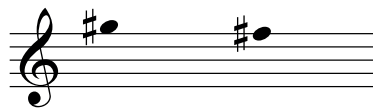
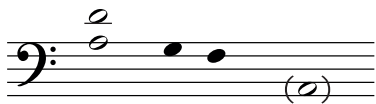
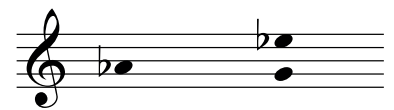
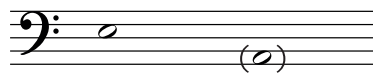
pauses are possible.

very softly, play it sometimes

The image shows a musical score for harp/percussion. It consists of two staves. The upper staff is a single line with a double bar line at the beginning. It contains four notes, each marked with an 'x' and a sharp sign (#). The notes are on the first, second, third, and fourth lines of the staff. The text 'cymbal, soft mallets' is written below the staff. To the right of the staff is an ellipsis (...). The lower staff is a five-line staff with a treble clef. It contains a whole note chord with a flat sign (b) and a sharp sign (#) below it, and a fermata above it. The text 'x...' is written above the staff. On either side of the musical notation, there is a small smiley face icon (☺).

percussion: different little sounds -dry leaves, something in a can, little bells, etc. play this sounds you selected during each little melody of the harp.

some of this sounds may continue until other melody appears.  
if not, leave a silence between them.



after a silence, at some point, gradually appearing:

The image shows three staves of musical notation. The top two staves are grouped by a brace on the left and represent an accordion. The top staff is in treble clef and contains a chord of B-flat, D, and F with a fermata. The middle staff is in bass clef and contains a single note G with a fermata. The bottom staff is in bass clef and contains a single note G with a fermata.

this can keep going for a while,  
or you can rest for some time.



Musical notation for the treble clef staff. It begins with a treble clef. The first measure contains a quarter note with a flat sign and a slur above it. The second measure contains a quarter note with a flat sign and a slur above it. The third measure contains a quarter note with a flat sign and a slur above it. The fourth measure contains a quarter note with a slur above it. A bracket above the third and fourth measures is labeled "for repeats". The fifth measure contains a quarter note with a slur above it, followed by a double bar line with repeat dots. The sixth measure contains a quarter note with a flat sign and a slur above it, followed by a bracket above it labeled "for ending".

Musical notation for the bass clef staff. It begins with a bass clef and a sharp sign on the first line. The first measure contains a quarter note with a slur above it. The second measure contains a quarter note with a sharp sign and a slur above it. The third measure contains a quarter note with a sharp sign and a slur above it. The fourth measure contains a quarter note with a sharp sign and a slur above it. The staff ends with an ellipsis (...). Above the first measure, the text "pizz." and "II" is written.