

luis menacho

« Sentires »

para piano

2005

# Convenciones generales

- La duración aproximada de cada sistema es de 8 segundos, por lo tanto el valor de las figuras es relativo al espacio que ocupan en el mismo.
- Se recomienda para la ejecución disponer las condiciones de silencio y el mínimo esfuerzo en la manipulación de los objetos. (diapasón, baqueta, etc.)

## Símbolos

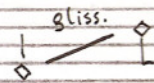
T = teclado

E = encordado

◇ bajar la tecla sin producir sonido



glissando con la uña sobre las teclas blancas sin bajarlas. todas blancas.



idem sobre las teclas negras.



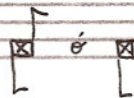
glissando con la yema sobre las cuerdas enmudecidas. En un piano de cola puede hacerse con los apuzadores; en un piano vertical puede usarse el pedal de la sardina.



golpe con la yema del dedo índice en la madera frontal del instrumento



golpe con un nudillo en la madera frontal del instrumento



golpe con la/s palma/s de los manos sobre la madera bajo el teclado.

pizz.

pizzicetto sobre una cuerda con la yema.

Ped →

Pedal derecho

\* vie pedal (ambos índices exactamente en la partitura)

1C.

pedal una corda

3C. vie pedal

▽

electro

U

diapasón

•

baqueta de tambor duro (punta de madera)



arpeggio ascendente con la yema siempre.

diapasón

Excitar el diapasón y apoyar su base en el borde superior delantero de la caja del piano (madera)



Producir un modo en la cuerda (índice) para obtener un armónico lejano.

sul pont.

(sulfonaticello) tocar la cuerda en la zona cercana al puente.

1C.



Teniendo bajo el pedal derecho bajar el pedal de corda y soltarlo súbitamente (piano vertical). En un piano de cola tocar

durante circa seis minutos

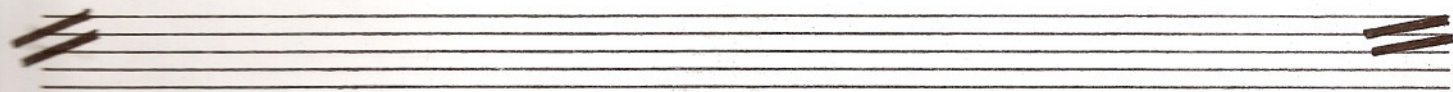
Sentires es la primera pieza de la segunda serie de piezas solistas

Sentires

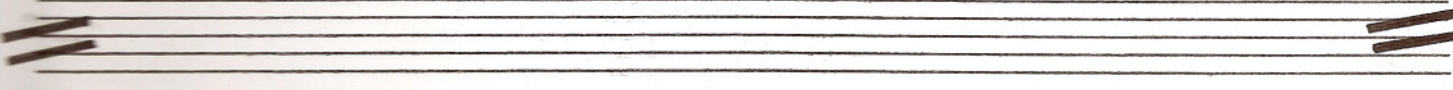
Luis Menacho

Corrente e leggero

Handwritten musical notation for the first system. The top staff features a treble clef, a glissando line labeled "gliss.", and a circled "x" with "mp" below it. The bottom staff shows a circled "x" with "mp" below it. Above the first staff, there are handwritten notes "4 3 2" and "mf" with a bracket under "3".

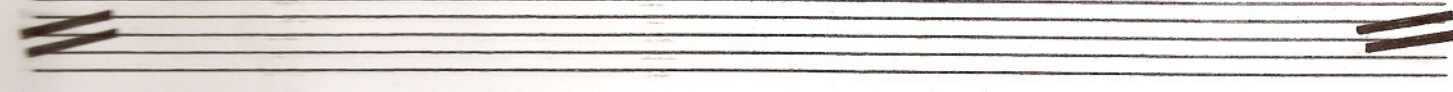


Handwritten musical notation for the second system. The top staff has a treble clef, a sharp sign (#), and a circled "x" with "poco sf" below it. The bottom staff has a circled "x" with "mf" below it. Above the first staff, there are handwritten notes "3 3" and "mf". Above the second staff, there are handwritten notes "3", "4 3 2", and "mf".



Handwritten musical notation for the third system. The top staff has a glissando line labeled "gliss.", a circled "x", and a "15va." marking. The bottom staff has a circled "x" with "mf" below it. Above the first staff, there are handwritten notes "3 2" and "mf".

Handwritten musical notation for the fourth system. The top staff has a circled "x" with "mf" below it. The bottom staff has a circled "x" with "mf" below it. Above the first staff, there are handwritten notes "3" and "mf". Above the second staff, there is a "Ped ->" marking.



Handwritten musical notation for the fifth system. The top staff has a treble clef, a sharp sign (#), and a glissando line labeled "gliss.". The bottom staff has a circled "x" with "mf" below it. Above the first staff, there are handwritten notes "3" and "mf".

Handwritten musical notation for the sixth system. The top staff has a treble clef, a circled "x", and a "15va." marking. The bottom staff has a circled "x" with "mf" below it. Above the first staff, there are handwritten notes "3 2" and "mf". Above the second staff, there are handwritten notes "4 3 2" and "mf".

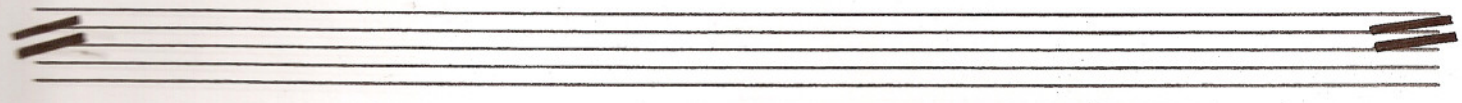
Handwritten musical score for guitar, first system. The system consists of two staves. The upper staff contains a treble clef with a 4/4 time signature. It features a sequence of notes: a quarter note G4, a quarter note F4 with a flat and a natural sign, and a quarter note G4. Above the first two notes are fingerings '4 3 2' and 'x x x'. A dynamic marking 'mp' is present. The lower staff contains a bass clef with a sequence of notes: a quarter note G3, a quarter note F3 with a flat and a natural sign, and a quarter note G3. Above the first two notes are fingerings '5' and '5'. A dynamic marking 'mp' is present. The system concludes with a double bar line. Above the system, there is a handwritten '15va.' with a dashed line indicating an octave shift. Below the system, there are markings '1c.', '3c. Ped →', and '\* 1c.'.

Handwritten musical score for guitar, second system. The system consists of two staves. The upper staff contains a treble clef with a 4/4 time signature. It features a sequence of notes: a quarter note G4, a quarter note F4 with a flat and a natural sign, and a quarter note G4. Above the first two notes are fingerings '4 3 2' and 'x x x'. A dynamic marking 'mp' is present. The lower staff contains a bass clef with a sequence of notes: a quarter note G3, a quarter note F3 with a flat and a natural sign, and a quarter note G3. Above the first two notes are fingerings '5' and '5'. A dynamic marking 'mp' is present. The system concludes with a double bar line. Below the system, there are markings '1c.', '3c. Ped →', and '\* 1c.'.

Handwritten musical score for guitar, third system. The system consists of two staves. The upper staff contains a treble clef with a 4/4 time signature. It features a sequence of notes: a quarter note G4, a quarter note F4 with a flat and a natural sign, and a quarter note G4. Above the first two notes are fingerings '4 3 2' and 'x x x'. A dynamic marking 'mp' is present. The lower staff contains a bass clef with a sequence of notes: a quarter note G3, a quarter note F3 with a flat and a natural sign, and a quarter note G3. Above the first two notes are fingerings '5' and '5'. A dynamic marking 'mp' is present. The system concludes with a double bar line. Below the system, there are markings '1c.', '3c. Ped →', and '\* 1c.'.

Handwritten musical score for guitar, fourth system. The system consists of two staves. The upper staff contains a treble clef with a 4/4 time signature. It features a sequence of notes: a quarter note G4, a quarter note F4 with a flat and a natural sign, and a quarter note G4. Above the first two notes are fingerings '4 3 2' and 'x x x'. A dynamic marking 'mp' is present. The lower staff contains a bass clef with a sequence of notes: a quarter note G3, a quarter note F3 with a flat and a natural sign, and a quarter note G3. Above the first two notes are fingerings '5' and '5'. A dynamic marking 'mp' is present. The system concludes with a double bar line. Below the system, there are markings '1c.', '3c. Ped →', and '\* 1c.'.

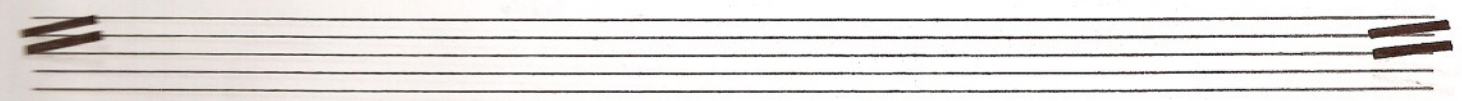
Handwritten musical notation on two staves. The top staff contains a treble clef, a key signature of one flat (B-flat), and a 3/4 time signature. It features a quarter note on G4, a quarter rest, and a quarter note on A4. Above the first measure is a bracket with the number '3'. Above the second measure is a bracket with 'b', a plus sign, and a circled '7'. Below the second measure is the instruction 'poco sf'. Above the third measure is a circled '3' with a plus sign. The bottom staff contains a bass clef, a key signature of one flat, and a 3/4 time signature. It features a quarter note on G3, a quarter rest, and a quarter note on A3. Below the second measure is the instruction '3C.'. Below the third measure is 'Ped →'. An asterisk '\*' is at the end of the system.



Handwritten musical notation on two staves. The top staff contains a treble clef, a key signature of one flat, and a 3/4 time signature. It features a quarter note on G4, a quarter rest, and a quarter note on A4. Above the first measure is a bracket with the number '3'. Above the second measure is a bracket with 'b', a plus sign, and a circled '7'. Below the second measure is the instruction 'poco sf'. Below the third measure is 'Ped →'. An asterisk '\*' is at the end of the system. The bottom staff contains a bass clef, a key signature of one flat, and a 3/4 time signature. It features a quarter note on G3, a quarter rest, and a quarter note on A3. Below the second measure is the instruction '3C.'. Below the third measure is 'Ped →'. An asterisk '\*' is at the end of the system.



Handwritten musical notation on two staves. The top staff contains a treble clef, a key signature of one flat, and a 3/4 time signature. It features a quarter note on G4, a quarter rest, and a quarter note on A4. Above the first measure is a bracket with the number '3'. Above the second measure is a bracket with 'b', a plus sign, and a circled '7'. Below the second measure is the instruction 'poco sf'. Below the third measure is 'Ped →'. An asterisk '\*' is at the end of the system. The bottom staff contains a bass clef, a key signature of one flat, and a 3/4 time signature. It features a quarter note on G3, a quarter rest, and a quarter note on A3. Below the second measure is the instruction '3C.'. Below the third measure is 'Ped →'. An asterisk '\*' is at the end of the system.



Handwritten musical notation on two staves. The top staff contains a treble clef, a key signature of one flat, and a 3/4 time signature. It features a quarter note on G4, a quarter rest, and a quarter note on A4. Above the first measure is a bracket with the number '3'. Above the second measure is a bracket with 'b', a plus sign, and a circled '7'. Below the second measure is the instruction 'poco sf'. Below the third measure is 'Ped →'. An asterisk '\*' is at the end of the system. The bottom staff contains a bass clef, a key signature of one flat, and a 3/4 time signature. It features a quarter note on G3, a quarter rest, and a quarter note on A3. Below the second measure is the instruction '3C.'. Below the third measure is 'Ped →'. An asterisk '\*' is at the end of the system.

(T) 15va. *mf* *f* *mp* *b* 4 3 2 *x x x x*

*Ped* → *♯* *♯* *♯* *♯* *Ped* →

4 3 2 *x x x x* *poco sf* *mp* 15va. *sostenuto*

*♯* *♯* *♯* *♯* *Ped* →

15va. *mf* *f* *♯* *mp* 15va. *♯* *♯* *♯* *♯* *Ped* → *♯* *♯* *♯* *♯* *Ped* →

15va. *b* *♯* *sempre* *b* *♯* *♯* *♯* *♯* *Ped* → *♯* *♯* *♯* *♯* *Ped* → *♯* *♯* *♯* *♯* *Ped* →

Y (°)

\* Ped →

\* Ped →

15<sup>va.</sup>

\* Ped →      \* Ped →      \* Ped →

E *diaz. sulpant.*

\* Ped →

(°) Golpe en la base del diapason sobre una saliente del arco.

Handwritten musical notation on two staves. The upper staff contains a treble clef, a key signature of one sharp (F#), and a note with a downward-pointing triangle above it. The lower staff contains a bass clef and a note with a square box around it and a sharp sign (#) below it.

Handwritten musical notation on two staves. The upper staff is labeled "yema" and contains a treble clef, a key signature of one sharp (F#), and a note with a wavy line above it. The lower staff is labeled "sostenuto" and contains a treble clef, a key signature of one sharp (F#), and a note with a diamond shape around it. A star symbol (\*) is written below the lower staff.

Handwritten musical notation on two staves. The upper staff contains a treble clef, a key signature of one sharp (F#), and a note with a downward-pointing triangle above it. The lower staff contains a bass clef and a note with a downward-pointing triangle above it. The text "dizz. (yema)" is written above the lower staff. A star symbol (\*) is written below the lower staff.

Handwritten musical notation on two staves. The upper staff contains a treble clef, a key signature of one sharp (F#), and a note with a downward-pointing triangle above it. The text "15va." is written above the staff. The lower staff contains a bass clef and a note with a downward-pointing triangle above it. The text "ped ->" is written below the lower staff. A star symbol (\*) is written below the lower staff.



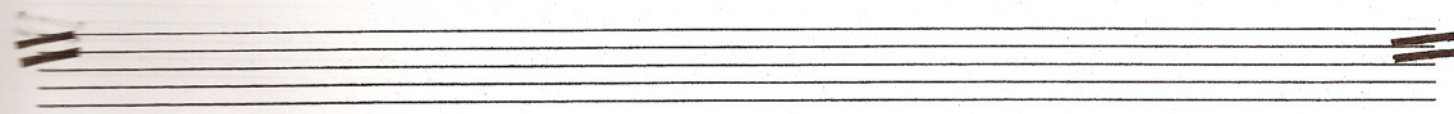
Handwritten musical notation for the first system. The top staff is in treble clef with a key signature of one sharp (F#) and a common time signature (C). It contains a half note chord (F#3, C4) and a half note chord (F#3, C4, G4). The bottom staff is in bass clef and contains a half note chord (F#3, C4) and a half note chord (F#3, C4, G4). Annotations include "ossia" above a bracketed section, "1c. sfz" with an accent mark, and a circled "sfz". A vertical line with "E" above it is present. A double bar line is at the end of the system.

Handwritten musical notation for the second system. The top staff is in treble clef with a key signature of one sharp (F#) and a common time signature (C). It contains a half note chord (F#3, C4) and a half note chord (F#3, C4, G4). The bottom staff is in bass clef and contains a half note chord (F#3, C4) and a half note chord (F#3, C4, G4). Annotations include "ritardando" above the first measure and "pizz." above the second measure. A double bar line is at the end of the system.

Handwritten musical notation for the third system. The top staff is in treble clef with a key signature of one sharp (F#) and a common time signature (C). It contains a half note chord (F#3, C4) and a half note chord (F#3, C4, G4). The bottom staff is in bass clef and contains a half note chord (F#3, C4) and a half note chord (F#3, C4, G4). Annotations include "pizz. (yema)" above the first measure and "ped →" below the first measure. A double bar line is at the end of the system.

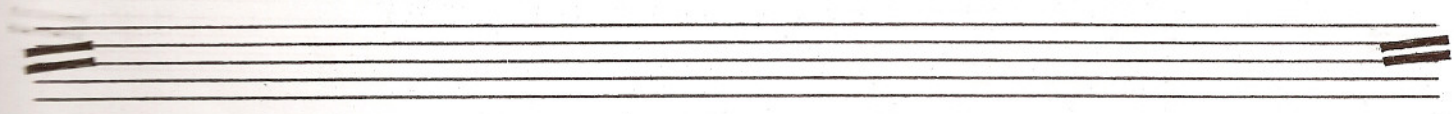
Handwritten musical notation for the fourth system. The top staff is in treble clef with a key signature of one sharp (F#) and a common time signature (C). It contains a half note chord (F#3, C4) and a half note chord (F#3, C4, G4). The bottom staff is in bass clef and contains a half note chord (F#3, C4) and a half note chord (F#3, C4, G4). Annotations include "(pizz)" above the first measure and "2nd →" below the first measure. A double bar line is at the end of the system.

III pizz. sempre

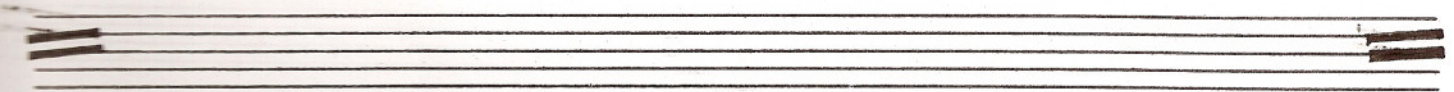


oposto

(pizz.)



Ped →



\*

spazio

ord. T

8 30+

ped →

poco

bliss.

(◇)

T

E sul Re (D) sempre

8 40

ped →

\*

no mensurato. poco irregolare

(E)

p sempre

pochiss.

8 0

pp

p sempre

8 0

(3) Ambito registral medio variabile de accordo = las posibilidades de acceso de cada instrumento.

Handwritten musical score system 1. The top staff features a long horizontal line with vertical tick marks, followed by a treble clef staff with notes marked with 'x' and 'mp'. The bottom staff contains a treble clef staff with notes marked with 'T', 'mp', and 'ped →', and a grand staff with notes marked with 'p' and '\*'. A double bar line is present at the end of the system.

Handwritten musical score system 2. The top staff has notes marked with 'T', '>', 'sfz', 'E', 'p', and 'T'. The bottom staff has notes marked with 'ped →', '\*', 'ped →', and '\*'. A double bar line is present at the end of the system.

Handwritten musical score system 3. The top staff has notes marked with 'E', 'p', and 'Y'. The bottom staff has notes marked with 'T', '#', 'p', and 'sempre'. A double bar line is present at the end of the system.

Handwritten musical score system 4. The top staff has notes marked with 'T' and '15va.' with a dashed line. The bottom staff has notes marked with '#', 'p', and '4'. A double bar line is present at the end of the system.

Handwritten musical notation on two staves. The top staff contains notes with slurs and accents, and a sharp sign (#) below. The bottom staff contains a note with a sharp sign (#) and a slur, with the text "p sempre" written below.



Handwritten musical notation on two staves. The top staff has a note with a slur and a sharp sign (#) below. The bottom staff has notes with slurs and a sharp sign (#) below. The text "hasta la extinción del sonido" is written between the staves. At the end of the top staff, there is a "p" and a slur. At the end of the bottom staff, there is a slur and a sharp sign (#).

Ped → ☺ \*

Lo pletó. primavera de 2003. r

